

# AFRI APPLIQUE 5X7 - ENIGMA EMBROIDERY

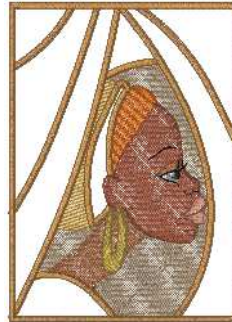
Printed 6/4/2020



- 1. Placement Line (App:1)
- 2. Cutting Line (App:2)
- 3. Tackdown (App:3)
- 4. Placement Line (App:1)
- 5. Cutting Line (App:2)
- 6. Tackdown (App:3)
- 7. Placement Line (App:1)
- 8. Cutting Line (App:2)
- 9. Tackdown (App:3)
- 10. Placement Line (App:1)
- 11. Cutting Line (App:2)
- 12. Tackdown (App:3)
- 13. Cloudy Tan (Mar:1127)
- 14. Dark Carrot (Mar:1043)
- 15. Summer Citrus (Mar:1007)
- 16. Leather Tan (Mar:1142)
- 17. Rich Ginger (Mar:1140)
- 18. Copper Dusk (Mar:1138)
- 19. Rich Ginger (Mar:1140)
- 20. Blossom (Mar:1426)
- 21. Copper Dusk (Mar:1138)
- 22. Black (Mar:1180)
- 23. White (BER:15)
- 24. sheepskin (Mar:1430)
- 25. Sunburn (Mar:1190)
- 26. Black (Mar:1180)

**Ee161a-01.art60**

4.90x6.79 inches; 36,174 stitches  
26 thread changes; 14 colors



- 1. Placement Line (App:1)
- 2. Cutting Line (App:2)
- 3. Tackdown (App:3)
- 4. Placement Line (App:1)
- 5. Cutting Line (App:2)
- 6. Tackdown (App:3)
- 7. Placement Line (App:1)
- 8. Cutting Line (App:2)
- 9. Tackdown (App:3)
- 10. Placement Line (App:1)
- 11. Cutting Line (App:2)
- 12. Tackdown (App:3)
- 13. Cloudy Tan (Mar:1127)
- 14. Copper Orb (Mar:1012)
- 15. Sunburn (Mar:1190)
- 16. Beechwood (Mar:1187)
- 17. Rich Ginger (Mar:1140)
- 18. Copper Dusk (Mar:1138)
- 19. sheepskin (Mar:1430)
- 20. Black (Mar:1180)
- 21. White (BER:15)
- 22. Black (Mar:1180)
- 23. Blossom (Mar:1426)

**Ee161a-02.art60**

4.90x6.77 inches; 32,422 stitches  
23 thread changes; 13 colors



- 1. Placement Line (App:1)
- 2. Cutting Line (App:2)
- 3. Tackdown (App:3)
- 4. Placement Line (App:1)
- 5. Cutting Line (App:2)
- 6. Tackdown (App:3)
- 7. Placement Line (App:1)
- 8. Cutting Line (App:2)
- 9. Tackdown (App:3)
- 10. Placement Line (App:1)
- 11. Cutting Line (App:2)
- 12. Tackdown (App:3)
- 13. Summer Citrus (Mar:1007)
- 14. Beechwood (Mar:1187)
- 15. Cloudy Tan (Mar:1127)
- 16. Rich Ginger (Mar:1140)
- 17. Copper Dusk (Mar:1138)
- 18. Leather Tan (Mar:1142)
- 19. sheepskin (Mar:1430)
- 20. Blossom (Mar:1426)
- 21. Black (Mar:1180)
- 22. White (Mar:1179)
- 23. Black (Mar:1180)

**Ee161a-03.art60**

4.90x6.80 inches; 35,265 stitches  
23 thread changes; 13 colors



- 1. Placement Line (App:1)
- 2. Cutting Line (App:2)
- 3. Tackdown (App:3)
- 4. Placement Line (App:1)
- 5. Cutting Line (App:2)
- 6. Tackdown (App:3)
- 7. Placement Line (App:1)
- 8. Cutting Line (App:2)
- 9. Tackdown (App:3)
- 10. Placement Line (App:1)
- 11. Cutting Line (App:2)
- 12. Tackdown (App:3)
- 13. Cloudy Tan (Mar:1127)
- 14. Rich Ginger (Mar:1140)
- 15. Copper Dusk (Mar:1138)
- 16. Copper Orb (Mar:1012)
- 17. Sunburn (Mar:1190)
- 18. Copper Orb (Mar:1012)
- 19. Blossom (Mar:1426)
- 20. sheepskin (Mar:1430)
- 21. Black (Mar:1180)
- 22. White (Mar:1179)
- 23. Black (Mar:1180)
- 24. White (Mar:1179)

**Ee161a-04.art60**

4.89x6.80 inches; 33,757 stitches  
24 thread changes; 12 colors



- 1. Placement Line (App:1)
- 2. Cutting Line (App:2)
- 3. Tackdown (App:3)
- 4. Placement Line (App:1)
- 5. Cutting Line (App:2)
- 6. Tackdown (App:3)
- 7. Placement Line (App:1)
- 8. Cutting Line (App:2)
- 9. Tackdown (App:3)
- 10. Placement Line (App:1)
- 11. Cutting Line (App:2)
- 12. Tackdown (App:3)
- 13. Sunburn (Mar:1190)
- 14. Mahogany (Mar:1161)
- 15. Cloudy Tan (Mar:1127)
- 16. sheepskin (Mar:1430)
- 17. Rich Ginger (Mar:1140)
- 18. Copper Dusk (Mar:1138)
- 19. Black (Mar:1180)
- 20. White (BER:15)
- 21. Black (Mar:1180)
- 22. Blossom (Mar:1426)
- 23. Copper Dusk (Mar:1138)

**Ee161a-05.art60**

4.97x6.91 inches; 34,445 stitches  
23 thread changes; 12 colors



- 1. Placement Line (App:1)
- 2. Cutting Line (App:2)
- 3. Tackdown (App:3)
- 4. Placement Line (App:1)
- 5. Cutting Line (App:2)
- 6. Tackdown (App:3)
- 7. Placement Line (App:1)
- 8. Cutting Line (App:2)
- 9. Tackdown (App:3)
- 10. Placement Line (App:1)
- 11. Cutting Line (App:2)
- 12. Tackdown (App:3)
- 13. Cloudy Tan (Mar:1127)
- 14. Sunburn (Mar:1190)
- 15. Summer Citrus (Mar:1007)
- 16. Rich Ginger (Mar:1140)
- 17. Copper Dusk (Mar:1138)
- 18. White (BER:15)
- 19. Black (Mar:1180)
- 20. Blossom (Mar:1426)
- 21. sheepskin (Mar:1430)
- 22. White (BER:15)
- 23. Mahogany (Mar:1161)

**Ee161a-06.art60**

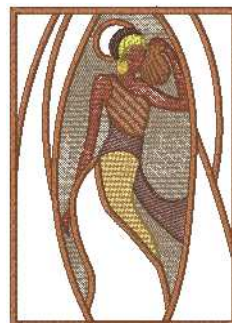
4.97x6.89 inches; 31,831 stitches  
23 thread changes; 13 colors



- 1. Placement Line (App:1)
- 2. Cutting Line (App:2)
- 3. Tackdown (App:3)
- 4. Placement Line (App:1)
- 5. Cutting Line (App:2)
- 6. Tackdown (App:3)
- 7. Placement Line (App:1)
- 8. Cutting Line (App:2)
- 9. Tackdown (App:3)
- 10. Placement Line (App:1)
- 11. Cutting Line (App:2)
- 12. Tackdown (App:3)
- 13. Cloudy Tan (Mar:1127)
- 14. Rich Ginger (Mar:1140)
- 15. Mahogany (Mar:1161)
- 16. Sunburn (Mar:1190)
- 17. Summer Citrus (Mar:1007)
- 18. sheepskin (Mar:1430)
- 19. Copper Dusk (Mar:1138)
- 20. Dark Carrot (Mar:1043)
- 21. Rich Ginger (Mar:1140)

**Ee161a-07.art60**

4.98x6.87 inches; 36,347 stitches  
21 thread changes; 11 colors



- 1. Placement Line (App:1)
- 2. Cutting Line (App:2)
- 3. Tackdown (App:3)
- 4. Placement Line (App:1)
- 5. Cutting Line (App:2)
- 6. Tackdown (App:3)
- 7. Placement Line (App:1)
- 8. Cutting Line (App:2)
- 9. Tackdown (App:3)
- 10. Placement Line (App:1)
- 11. Cutting Line (App:2)
- 12. Tackdown (App:3)
- 13. Cloudy Tan (Mar:1127)
- 14. Copper Dusk (Mar:1138)
- 15. Rich Ginger (Mar:1140)
- 16. Summer Citrus (Mar:1007)
- 17. sheepskin (Mar:1430)
- 18. Mahogany (Mar:1161)
- 19. Copper Dusk (Mar:1138)
- 20. Copper Orb (Mar:1012)
- 21. Leather Tan (Mar:1142)
- 22. Copper Dusk (Mar:1138)

**Ee161a-08.art60**

4.98x6.96 inches; 36,221 stitches  
22 thread changes; 11 colors

# AFRI APPLIQUE 5X7 - ENIGMA EMBROIDERY

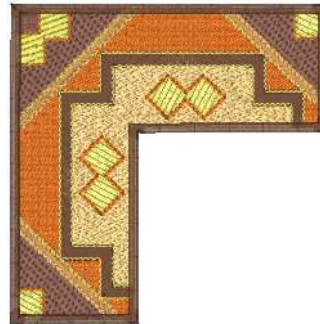
Printed 6/4/2020



- 1. Leather Tan (Mar:1142)
- 2. Copper Orb (Mar:1012)
- 3. Summer Citrus (Mar:1007)
- 4. Mahogany (Mar:1161)
- 5. Beechwood (Mar:1187)
- 6. Sunburn (Mar:1190)
- 7. Mahogany (Mar:1161)
- 8. Beechwood (Mar:1187)

**Ee161a-09.art60**

3.78x5.54 inches; 25,366 stitches  
8 thread changes; 6 colors



- 1. Copper Orb (Mar:1012)
- 2. Leather Tan (Mar:1142)
- 3. Sunburn (Mar:1190)
- 4. Summer Citrus (Mar:1007)
- 5. Sunburn (Mar:1190)
- 6. Mahogany (Mar:1161)
- 7. Summer Citrus (Mar:1007)
- 8. Beechwood (Mar:1187)
- 9. Copper Orb (Mar:1012)
- 10. Mahogany (Mar:1161)

**Ee161a-10.art60**

3.96x3.99 inches; 20,021 stitches  
10 thread changes; 6 colors



- 1. Copper Orb (Mar:1012)
- 2. Leather Tan (Mar:1142)
- 3. Sunburn (Mar:1190)
- 4. Mahogany (Mar:1161)
- 5. Summer Citrus (Mar:1007)
- 6. Sunburn (Mar:1190)
- 7. Beechwood (Mar:1187)
- 8. Copper Orb (Mar:1012)
- 9. Mahogany (Mar:1161)

**Ee161a-11.art60**

1.61x2.51 inches; 8,365 stitches  
9 thread changes; 6 colors



- 1. Leather Tan (Mar:1142)
- 2. Summer Citrus (Mar:1007)
- 3. Mahogany (Mar:1161)
- 4. Sunburn (Mar:1190)
- 5. Leather Tan (Mar:1142)
- 6. Beechwood (Mar:1187)

**Ee161a-12.art60**

1.56x1.70 inches; 5,875 stitches  
6 thread changes; 5 colors